

PART OF THE NW. 1/4, OF SECTION 17, T.6N., R.2E., S.L.B. & M.
BAILEY'S BACK FIVE FIRST AMENDMENT

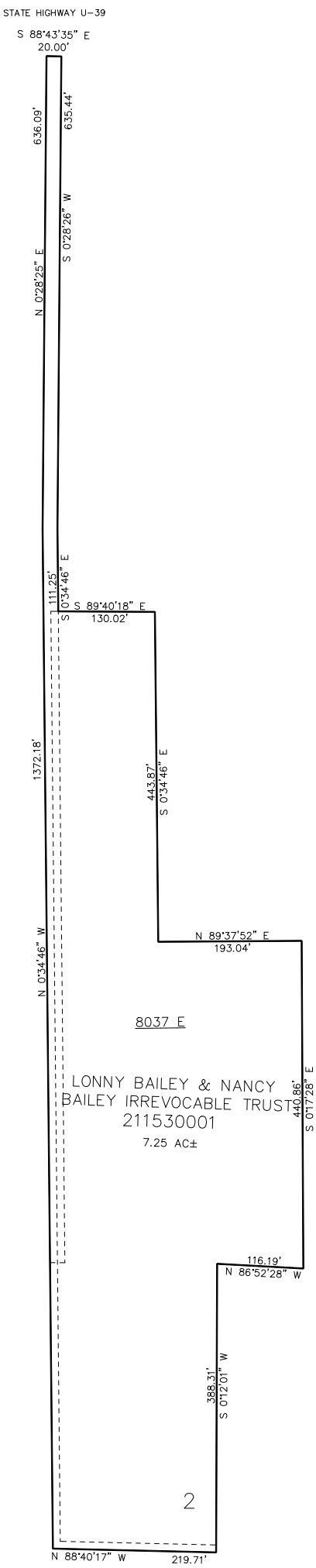
153

TAXING UNIT: 520

IN WEBER COUNTY
SCALE 1" = 200'

SEE PAGE 26-2

SEE PAGE 26-2



10' UTILITY & DRAINAGE EASEMENTS EACH
SIDE OF PROPERTY LINES AS INDICATED
BY DASHED LINES EXCEPT AS OTHERWISE
SHOWN.

FOR COMPLETE ENG DATA SEE
ORIGINAL DEDICATION PLAT IN
BOOK 85, PAGE 22 OF RECORDS.